



Six ConAgra Drive
Omaha, NE 68102

Technical Data Sheet

Product Name:	Hunt's Tomato Sauce	Product Code:	2700039061
Issue Date:	February 15, 2022	Net Weight:	6 lbs. 9 oz. (2.98kg)
Replace Date:	August 15, 2022	Brand:	Hunt's

Product Description – Tomato Sauce

Nutritional Information – Per 100g

Nutrient	Per 100g
Calories, kcal	33.31
Total Fat, g	0.09
Saturated Fat, g	0.03
Trans Fat, g	0.00
Cholesterol, mg	1.00
Sodium, mg	619.33
Total Carbohydrate, g	6.67
Dietary Fiber, g	2.17
Sugars, g	3.66
Added Sugar, g	0.00
Protein, g	1.34
Vitamin D, mcg	0.00
Calcium, mg	13.31
Iron, mg	0.52
Potassium, mg	299.43

Ingredient Ranges (%)

Ingredient	%
Tomato Puree (Water, Tomato Paste)	90 – 100%
Water	2 – 5%
Salt	<2%
Onion Powder	<2%
Garlic Powder	<2%
Red Pepper	<2%
Citric Acid (E330)	<2%

Ingredient Statement

INGREDIENTS: TOMATO PUREE (WATER, TOMATO PASTE), WATER, LESS THAN 2% OF: SALT, ONION POWDER, GARLIC POWDER, RED PEPPER, CITRIC ACID*. *NATURALLY DERIVED



Six ConAgra Drive
Omaha, NE 68102

Technical Data Sheet

Product Name:	Hunt's Tomato Sauce	Product Code:	2700039061
Issue Date:	February 15, 2022	Net Weight:	6 lbs. 9 oz. (2.98kg)
Replace Date:	August 15, 2022	Brand:	Hunt's

Country of Origin

This product is manufactured at a facility in the United States of America. The manufacturing site for this product is:

554 South Yosemite Avenue
Oakdale, California 95361

This facility is under the jurisdiction of the U.S. Food and Drug Administration (FDA) or the U.S. Department of Agriculture (USDA), and is in full compliance with requirements for Good Manufacturing Practices (GMP), Hazard Analysis and Critical Control Points (HACCP) and other pertinent food laws and regulations.

All correspondence regarding this product should be directed to the address below.

Conagra Brands
P.O. Box 3534
Chicago, IL 60654

Chemical & Physical Characteristics

pH:	3.80 – 4.20
Salt %:	1.02 – 1.54
Brix:	8.5 – 9.0
Color:	17 – 24
Appearance:	Typical
Flavor:	Typical

Microbiological Standards

Aerobic Plate Count:	< 100 CFU/g
Coliforms:	< 10 CFU/g
<i>Salmonella</i> :	Negative / 375 g

This product is shelf-stable under normal storage conditions. Microbiological control is established and maintained through thermal processing and package integrity. This product is produced under a Food Safety Plan that is compliant with FSMA requirements. The Food Safety Plan programs are designed to manage microbiological risks and include supportive Prerequisite Programs, Operational Prerequisite Programs, and validated CCPs. Good manufacturing/hygienic practices (GMPs and GHPs), hygienic zoning principles, supply chain controls, sanitation controls, and a robust environmental monitoring program are strictly adhered to during manufacturing. Therefore, the above microbiological parameters can be expected.

Storage

Store in a cool, dry place.

Shelf Life

630 days from date of manufacture.

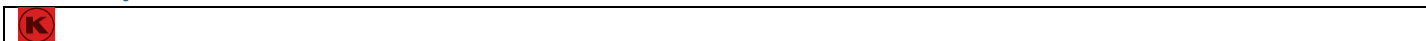


Six ConAgra Drive
Omaha, NE 68102

Technical Data Sheet

Product Name:	Hunt's Tomato Sauce	Product Code:	2700039061
Issue Date:	February 15, 2022	Net Weight:	6 lbs. 9 oz. (2.98kg)
Replace Date:	August 15, 2022	Brand:	Hunt's

Kosher/Halal Information



Lot Code Interpretation

Example: **2105722710A 03:56F**

LOT CODE (First 10 Digits)

Positions	1 – 4	=	Plant Identification [2105]
	5	=	Year [2017]
	6 – 8	=	Julian Date [227]
	9	=	Decade [1 = 2019]
	10	=	Spacer [Always 0]

OTHER CODE (Digits 11-14)*

	11	=	Product Code [A]
	12 – 15	=	Time Period [03:56]
	16	=	Production Line [F]

*These numbers are for internal use only and not part of the production lot

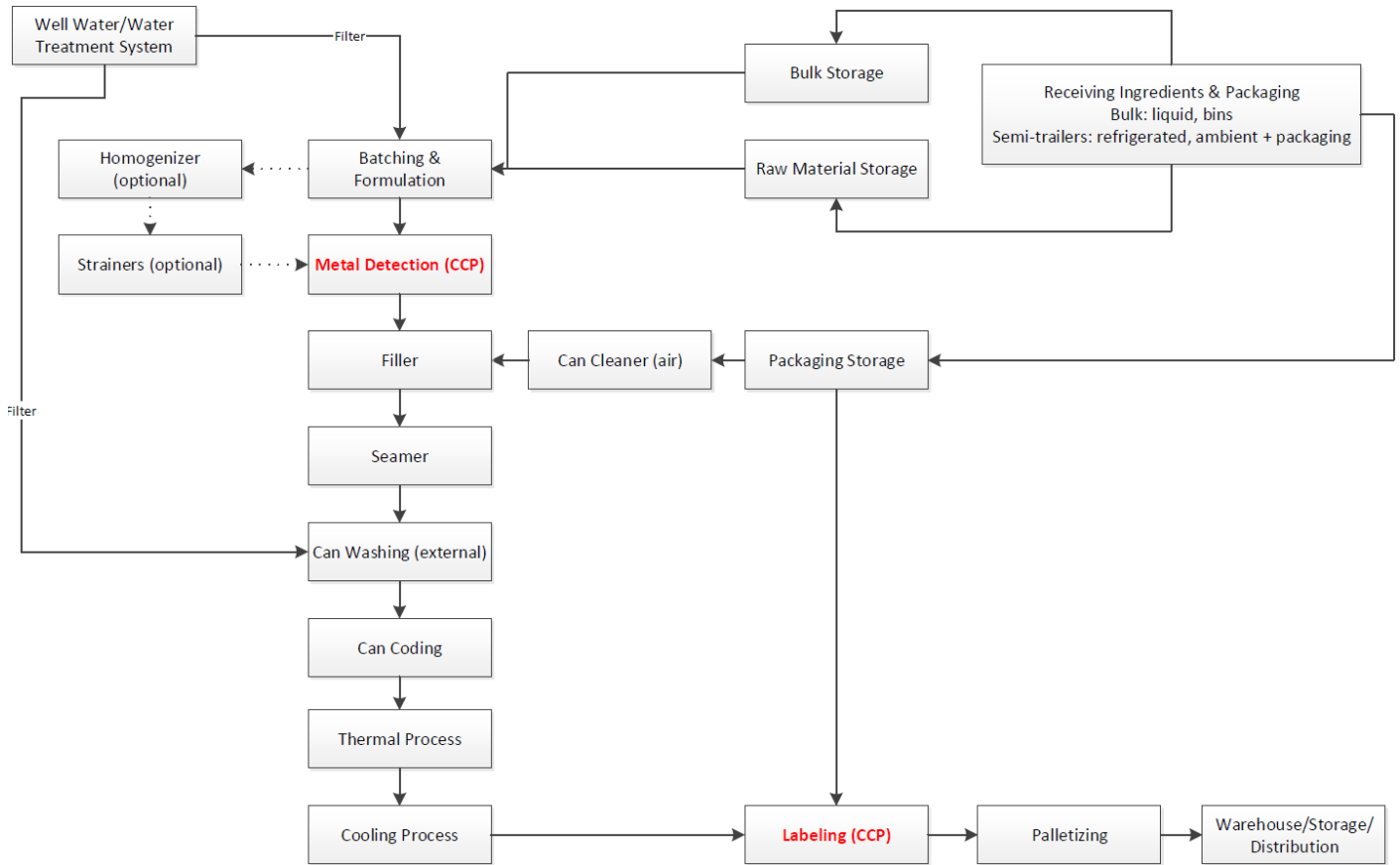


Six ConAgra Drive
Omaha, NE 68102

Technical Data Sheet

Product Name:	Hunt's Tomato Sauce	Product Code:	2700039061
Issue Date:	February 15, 2022	Net Weight:	6 lbs. 9 oz. (2.98kg)
Replace Date:	August 15, 2022	Brand:	Hunt's

Processing Flow Chart





Six ConAgra Drive
Omaha, NE 68102

Technical Data Sheet

Product Name:	Hunt's Tomato Sauce	Product Code:	2700039061
Issue Date:	February 15, 2022	Net Weight:	6 lbs. 9 oz. (2.98kg)
Replace Date:	August 15, 2022	Brand:	Hunt's

Label



Note:

The information provided in this document is confidential and proprietary of Conagra Brands, Inc. Given the confidential and proprietary nature of the information, it cannot be reproduced or provided to any third parties, including in response to any request for such information contained therein pursuant to any request from any Governmental or Regulatory body without the prior written permission of Conagra Brands, Inc.

Kevin Rosenthal
Research & Development
International – Global Markets

If you have questions, please contact kevin.rosenthal@conagra.com