

## Hreinsun og áfylling hráefna á ES-9100 2B2C kaffivél.

Þessi mynd kemur upp þegar hurð er opnuð.



Veljið viðkomandi valmynd á skjá til að framkvæma aðgerð.  
Mikilvægt að þetta sé gert til að vélin nýtist sem best og stoppi sem minnst af óþörfu.

Bætið daglega nýjum baunum á vélina og öðru hráefni eftir þörfum, **tæmið korgfötuna og endurstillið teljarastöðu.**



Kaffivélin kallar einnig eftir að láta losa korgfötu eftir ca. 200 bolla.

## Þrif á kaffivélinni.

Athugið að setja þjónustulykil í fyrir þessa aðgerð.



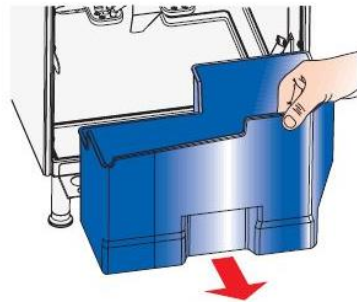
Mynd 1.

Opnið hurðina.



Mynd 2.

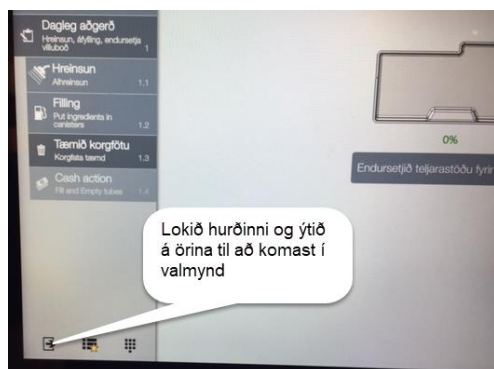
Takið dropabakkann út, þrifið og þurkið.



Mynd 3.

Takið korgfötuna út og tæmið þrifið einnig vélina að innan.

Endurstillið teljarastöðu við þessa aðgerð, til að fara aftur í skjámynd. Lokið hurð og ýtið á píluna vinstra megin (sjá mynd hér að neðan).



Vélin getur líka framkvæmt minniháttar þrif þá þarf að opna hurð og ýta á Hreinsun/Skolun

Setja þjónustulykil í þar til gerðan stað.

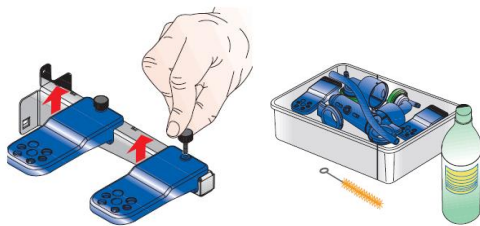
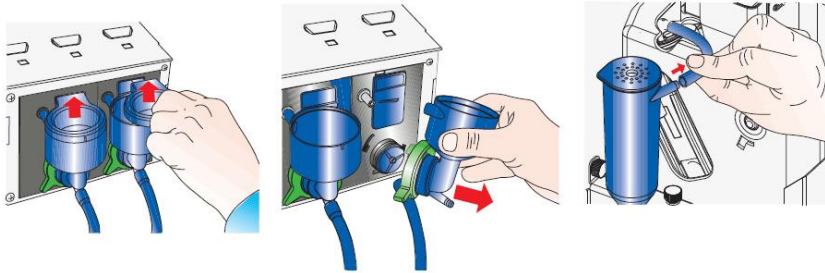


**Hreinsun, Athugið það er nauðsynlegt** að framkvæma þrif og skolun á bruggara með hreinsitöflu einu sinnum í viku. Ýtið á Hreinsun/Skolun og velja þann hluta sem á að þrifa, hafið hurðina opna við þessa aðgerð.



**Ath muna að setja könnu eða bolla undir til að taka við skolinu úr vél.**

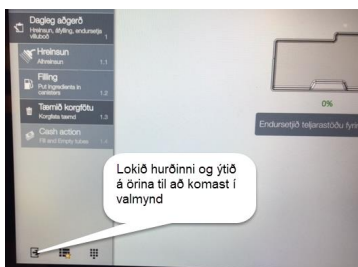
**Vikuleg þrif.** Taka þessa hluti og þrifa eins vel og hægt er.



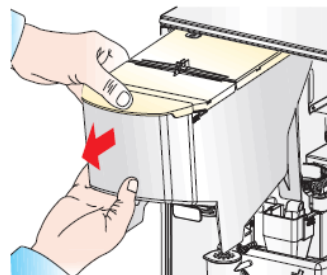
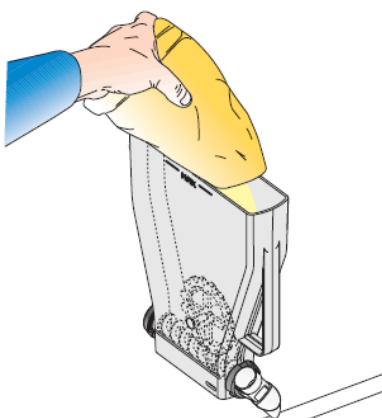
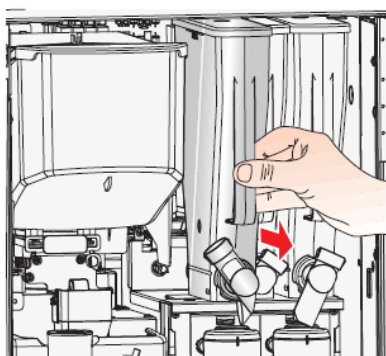
Þrifa vél að utan sem innan og muna að taka þjónustulykil úr vél.



Lokið hurðinni, ýtið á örina og vélin er tilbúin til notkunar.



## Áfylling hráefna.



Mynd 7.

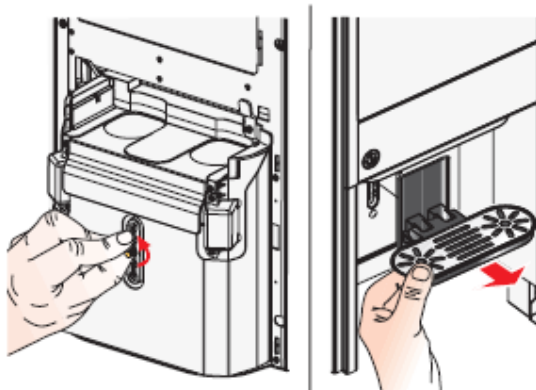
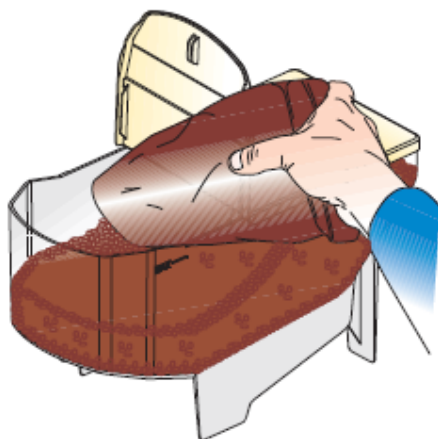
Lyftið upp og takið út.

Mynd 8.

Setjið rétta efnið í boxið, þurkið af og setjið aftur á sinn stað.

Mynd 9.

Lyftið lokinu efst á vél og opnið lokið á baunaboxinu.



**INN NES**

Fossaleyni 21 • 112 Reykjavík • Sími: 530 4000 • Sala: 530 4020 • [www.innnes.is](http://www.innnes.is)

## FAILURE LIST

### PUMP FAULT 1...7

If the current absorption of a pump is not between the range of default values, all the selections in which the pump is involved are disabled.

### FAULTY MIXER 1...6 (WHIPPER FAULT)

If the current absorption of a mixer motor is not between the range of default values, all the selections in which that mixer is involved are disabled.

### SOLENOID VALVE 1...7 (VALVE FAULT)

If the current absorption of a solenoid valve is not between the range of established values, all the selections in which that solenoid valve is involved are disabled.

### SHORT CIRCUIT MOSFET

The machine fails if a device intended to control direct current motors on the actuation board (mosfet) remains active.

### SHORT CIRCUIT

This failure is displayed if the software should detect a short-circuit on one of the direct current motors connected with the actuation board. A failure may be simultaneously detected on one of the direct current motors.

### COFFEE UNIT FAILURES

The position control microswitch of the coffee unit is read during the whole dispensing cycle. According to the micro readout and the dispensing phase of the unit, any failure is declared by locking the selections based on espresso coffee.

#### COFFEE UNIT - MICRO UNIT FAILURE -

While the brew unit is being handled, the control micro is not operated within a certain time limit. This failure may be associated with another positioning failure of the coffee unit.

#### COFFEE UNIT - START UNIT FAILURE -

The microswitch signals the coffee unit has not moved from the stand-by position.

#### COFFEE UNIT - BREW UNIT FAILURE -

The control micro signals that the coffee unit has not reached the brew position.

#### COFFEE UNIT - DISPENSING UNIT FAILURE -

During the brew phase, the control micro signals that the espresso unit is being handled.

### SUGAR/STIRRER FAILURE

If the current input of the direct current motor should fall outside the range of default values, this failure is displayed. Sugarless drinks can be dispensed.

### VOLUMETRIC COUNTER

No counting of the volumetric counter within a maximum time.

### INSTANT BOILER

The machine stops if the instant boiler water has not reached the temperature after having heated for 20 minutes since you powered on the machine or last made a selection.

### COFFEE UNIT - DISCHARGE UNIT FAILURE -

At the end of the brewing phase, the control micro signals that the coffee unit has not reached the "used dose discharge" position.

### COFFEE UNIT - STANDBY UNIT FAILURE -

The control micro signals that the brew unit has not moved back to the stand-by position after having discharged the coffee dose.

### RAM DATA

One or more than one area of the RAM memory contain altered data that have been corrected by default values. The machine continues to work, but it is recommended to initialise as soon as possible.

### ESPRESSO BOILER

The machine stops if the boiler water has not reached the temperature after having heated for 10 minutes since you powered on the machine or last made a selection.



**INNNEs**

Fossaleyni 21 • 112 Reykjavík • Sími: 530 4000 • Sala: 530 4020 • [www.innnes.is](http://www.innnes.is)



#### **CUP RELEASE**

If the cups sensor (optional) does not detect objects in the dispensing compartment for two consecutive times, the machine can be locked or left enabled to operate with a cup.

#### **COIN MECHANISM**

The machine stops if it should receive an over 2-sec. pulse on a validator line or if the communication with the serial coin mechanism is not longer than 30 seconds (Executive protocol) or 75 seconds (BDV protocol).

#### **FB BRUSH**

It is due to a positioning error of the scraper. The machine is not locked, but the selections based on fresh product are disabled.

#### **NO CUP**

As soon as the no cups microswitch is opened, the cup column shift motor is actuated. The machine is put out of order if the microswitch has not closed after a complete rotation. If the machine is complete with an (optional) cup sensor, the machine will display the "No cups" message. Use the corresponding function to define whether the failure shall lock the machine or let it ready for a cup sale.

#### **MACHINE BOARD**

Lack of communication between the machine board and the CPU board.  
Check the electrical connections between the two boards.

#### **ESPRESSO LOW TEMPERATURE**

The espresso boiler temperature is lower than the minimum temperature programmed to dispense espresso.  
Wait for the minimum dispensing temperature to be reached.

#### **EMPTY DOSER 1...7**

The minimum level of instant powder in the container associated with motor-doser has been reached.  
The signal is active if they controls on instant powder containers are activated.  
Check the level of instant powder in the containers.

#### **EMPTY ESPRESSO DISPENSER 1...2**

The minimum level of coffee beans in the container has been reached.  
The signal is active if they controls on coffee beans containers are activated.  
Check the level of coffee beans in the containers.

#### **LIQUID RESIDUE CONTAINER FULL**

The liquid residue container float operates the "Liquid residue container full" micro-switch.  
Empty the liquid residue container and reposition it to reset the fault.

#### **LIQUID RESIDUE CONTAINER NOT PRESENT**

The liquid residue container does not operate the micro switch indicating the presence of the container.  
Check that the liquid residue container is correctly positioned inside the machine.

#### **WATER TANK EMPTY**

Lack of water from the mains or self-feeding tank.  
Make sure that the machine is connected to the water mains and that the tap is open or the tank is full of water.  
Touch the "Reset" button to restore the operation of the machine.

#### **EMPTY COFFEE**

The grinder exceeds the normal speed for more than 5 seconds.  
Instant beverage products remain available.  
Make sure the coffee bean container is full.

#### **WATER LEAKAGE**

The Air-break micro switch signals the lack of water continuously following the opening of the water inlet solenoid valve or the activation of the self-feeding pump (filling of the air break).  
Check that there are no water leaks in the hydraulic circuit of the machine (disconnected hoses, ...)

#### **MACHINE DATABASE NOT AVAILABLE**

The database that manages the machine configurations is not present on the machine, it cannot be loaded or created.  
Make sure there is sufficient memory space.

#### **AIR-BREAK FILLING TIME OUT**

The air-break micro switch does not report the achievement of the water level in the Air-break in the allotted time during filling.



**INNNES**

Fossaleyni 21 · 112 Reykjavík · Sími: 530 4000 · Sala: 530 4020 · [www.innnes.is](http://www.innnes.is)