



Six ConAgra Drive  
Omaha, NE 68102

## Technical Data Sheet

<b>Product Name:</b>	Hunt's Tomato Sauce	<b>Product Code:</b>	2700039014
<b>Issue Date:</b>	February 15, 2022	<b>Net Weight:</b>	15 oz. (425g)
<b>Replace Date:</b>	August 15, 2022	<b>Brand:</b>	Hunt's

### Product Description – Tomato Sauce

### Nutritional Information – Per 100g

Nutrient	Per 100g
Calories, kcal	31.60
Total Fat, g	0.11
Saturated Fat, g	0.03
Trans Fat, g	0.00
Cholesterol, mg	1.00
Sodium, mg	608.41
Carbohydrate, g	6.30
Dietary Fiber, g	2.50
Total Sugar, g	2.92
Added Sugar, g	0.00
Protein, g	1.25
Vitamin D, mcg	0.00
Calcium, mg	13.01
Iron, mg	0.51
Potassium, mg	295.64

### Ingredient Ranges (%)

Ingredient	%
Tomato Puree (Water, Tomato Paste)	90 – 100%
Water	2 – 5%
Salt	<2%
Citric Acid	<2%
Onion Powder	<2%
Garlic Powder	<2%
Red Pepper	<2%

### Ingredient Statement

**INGREDIENTS:** TOMATO PUREE (WATER, TOMATO PASTE), WATER, LESS THAN 2% OF: SALT, CITRIC ACID, ONION POWDER, GARLIC POWDER, RED PEPPER.



Six ConAgra Drive  
Omaha, NE 68102

## Technical Data Sheet

<b>Product Name:</b>	Hunt's Tomato Sauce	<b>Product Code:</b>	2700039014
<b>Issue Date:</b>	February 15, 2022	<b>Net Weight:</b>	15 oz. (425g)
<b>Replace Date:</b>	August 15, 2022	<b>Brand:</b>	Hunt's

### Country of Origin

This product is manufactured at a facility in the United States of America. The manufacturing site is:

554 South Yosemite Avenue  
Oakdale, California 95361

This facility is under the jurisdiction of the U.S. Food and Drug Administration (FDA) or the U.S. Department of Agriculture (USDA), and is in full compliance with requirements for Good Manufacturing Practices (GMP), Hazard Analysis and Critical Control Points (HACCP) and other pertinent food laws and regulations.

All correspondence regarding this product should be directed to the address below.

Conagra Brands  
P.O. Box 3534  
Chicago, IL 60654

### Chemical & Physical Characteristics

pH:	4.2 Maximum
Salt, %:	1.02 – 1.54
Brix:	8.5 – 9.0
Color:	17 – 24
Appearance:	Typical
Flavor:	Typical

### Microbiological Standards

Aerobic Plate Count:	< 100 CFU/g
Coliforms:	< 10 CFU/g
<i>Salmonella</i> :	Negative / 375 g

This product is shelf-stable under normal storage conditions. Microbiological control is established and maintained through thermal processing and package integrity. This product is produced under a Food Safety Plan that is compliant with FSMA requirements. The Food Safety Plan programs are designed to manage microbiological risks and include supportive Prerequisite Programs, Operational Prerequisite Programs, and validated CCPs. Good manufacturing/hygienic practices (GMPs and GHPs), hygienic zoning principles, supply chain controls, sanitation controls, and a robust environmental monitoring program are strictly adhered to during manufacturing. Therefore, the above microbiological parameters can be expected.

### Storage

Store in a cool, dry place.

### Shelf Life

630 days from date of manufacture.

### Kosher/Halal Information





Six ConAgra Drive  
Omaha, NE 68102

## Technical Data Sheet

<b>Product Name:</b>	<b>Hunt's Tomato Sauce</b>	<b>Product Code:</b>	<b>2700039014</b>
<b>Issue Date:</b>	<b>February 15, 2022</b>	<b>Net Weight:</b>	<b>15 oz. (425g)</b>
<b>Replace Date:</b>	<b>August 15, 2022</b>	<b>Brand:</b>	<b>Hunt's</b>

### Lot Code Interpretation

Example: **2105722710A 03:56F**

LOT CODE (First 10 Digits)

Positions      1 – 4    =    Plant Identification [2105]  
                    5        =    Year [2017]  
                    6 – 8    =    Julian Date [227]  
                    9        =    Decade [1 = 2019]  
                    10     =    Spacer [Always 0]

OTHER CODE (Digits 11-14)\*

11        =    Product Code [A]  
12 – 15 =    Time Period [03:56]  
16        =    Production Line [F]

\*These numbers are for internal use only and not part of the production lot

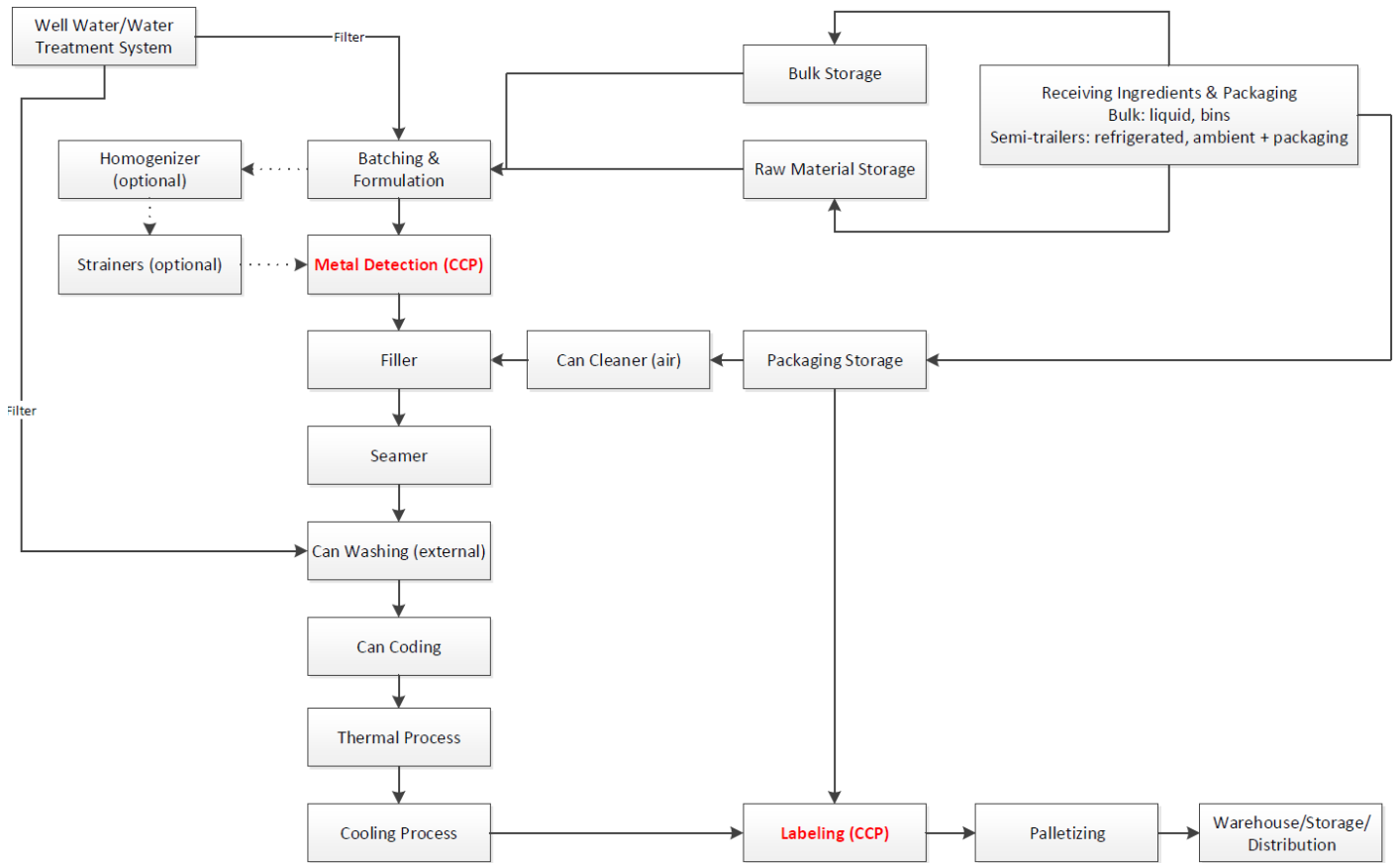


Six ConAgra Drive  
Omaha, NE 68102

## Technical Data Sheet

<b>Product Name:</b>	<b>Hunt's Tomato Sauce</b>	<b>Product Code:</b>	<b>2700039014</b>
<b>Issue Date:</b>	<b>February 15, 2022</b>	<b>Net Weight:</b>	<b>15 oz. (425g)</b>
<b>Replace Date:</b>	<b>August 15, 2022</b>	<b>Brand:</b>	<b>Hunt's</b>

### Processing Flow Chart





Six ConAgra Drive  
Omaha, NE 68102

## Technical Data Sheet

<b>Product Name:</b>	Hunt's Tomato Sauce	<b>Product Code:</b>	2700039014
<b>Issue Date:</b>	February 15, 2022	<b>Net Weight:</b>	15 oz. (425g)
<b>Replace Date:</b>	August 15, 2022	<b>Brand:</b>	Hunt's

### Label

**100% NATURAL**

**Hunt's**

**Tomato Sauce**

**Nutrition Facts**  
about 7 servings per container  
Serving size 1/4 cup (62g)

Amount per serving		% Daily Value*
<b>Calories</b>	<b>20</b>	
<b>Total Fat</b> 0g		0%
Saturated Fat 0g		0%
Trans Fat 0g		
<b>Cholesterol</b> 0mg		0%
<b>Sodium</b> 380mg		17%
<b>Total Carbohydrate</b> 4g		1%
Dietary Fiber 2g		7%
Total Sugars 2g		
Includes 0g Added Sugars		0%
<b>Protein</b> less than 1g		
Vit. D 0mcg 0%	Calcium 0mg 0%	
Iron 0mg 0%	Potas. 180mg 4%	

\*The % Daily Value (DV) tells you how much a nutrient in a serving of food contributes to a daily diet. 2,000 calories a day is used for general nutrition advice.

INGREDIENTS: TOMATOES, WATER, TOMATO PASTE, WATER, LESS THAN 2% OF: SALT, CITRIC ACID, ONION POWDER, GARLIC POWDER, RED PEPPER.

Conagra Brands  
P.O. BOX 2534  
CHICAGO, IL 60684

QUESTIONS, VISIT US AT [www.hunts.com](http://www.hunts.com) OR CALL 1-800-858-6372

NO ARTIFICIAL PRESERVATIVES OR INGREDIENTS.

NON-GMO Project VERIFIED

TOMATOES (K)

NET WT 15 OZ (425g)

FOR DELICIOUS RECIPES VISIT [HUNTS.COM](http://HUNTS.COM)

10094199

Scan here or call 1-800-858-6372 for more food information.

Scan here or call 1-800-858-6372 for more food information.

Scan here or call 1-800-858-6372 for more food information.

### Note:

The information provided in this document is confidential and proprietary of Conagra Brands, Inc. Given the confidential and proprietary nature of the information, it cannot be reproduced or provided to any third parties, including in response to any request for such information contained therein pursuant to any request from any Governmental or Regulatory body without the prior written permission of Conagra Brands, Inc.

Kevin Rosenthal  
Research & Development  
International – Global Markets

If you have questions, please contact [kevin.rosenthal@conagra.com](mailto:kevin.rosenthal@conagra.com)