



Six ConAgra Drive  
Omaha, NE 68102

## Technical Data Sheet

<b>Product Name:</b>	<b>Angela Mia Extra Heavy Pizza Sauce</b>	<b>Product Code:</b>	<b>2700038867</b>
<b>Issue Date:</b>	<b>February 15, 2022</b>	<b>Net Weight:</b>	<b>6 lbs. 11 oz. (3.03kg)</b>
<b>Replace Date:</b>	<b>August 15, 2022</b>	<b>Brand:</b>	<b>Angela Mia</b>

### Product Description – Pizza Sauce, Extra Heavy

### Nutritional Information – Per 100g

Nutrient	Per 100g
Calories, kcal	58.95
Total Fat, g	0.16
Saturated Fat, g	0.05
Trans Fat, g	0.00
Cholesterol, mg	1.00
Sodium, mg	327.06
Total Carbohydrate, g	11.84
Dietary Fiber, g	4.28
Sugars, g	5.58
Added Sugars, g	0.00
Protein, g	2.32
Vitamin D, mcg	0.00
Calcium, mg	24.98
Iron, mg	1.09
Potassium, mg	600.53

### Ingredient Ranges (%)

Ingredient	%
Tomato Puree (Water, Tomato Paste)	90 – 100%
Salt	2 – 5%
Basil	<2%
Citric Acid (E330) (Naturally Derived)	<2%

### Ingredient Statement

**INGREDIENTS: TOMATO PUREE (WATER, TOMATO PASTE), SALT, BASIL, CITRIC ACID\*.  
\*NATURALLY DERIVED**



Six ConAgra Drive  
Omaha, NE 68102

## Technical Data Sheet

<b>Product Name:</b>	<b>Angela Mia Extra Heavy Pizza Sauce</b>	<b>Product Code:</b>	<b>2700038867</b>
<b>Issue Date:</b>	<b>February 15, 2022</b>	<b>Net Weight:</b>	<b>6 lbs. 11 oz. (3.03kg)</b>
<b>Replace Date:</b>	<b>August 15, 2022</b>	<b>Brand:</b>	<b>Angela Mia</b>

### Country of Origin

This product is manufactured at a facility in the United States of America. The manufacturing site is:

554 S. Yosemite Ave.  
Oakdale, California 95361

This facility is under the jurisdiction of the U.S. Food and Drug Administration (FDA) or the U.S. Department of Agriculture (USDA), and is in full compliance with requirements for Good Manufacturing Practices (GMP), Hazard Analysis and Critical Control Points (HACCP) and other pertinent food laws and regulations.

All correspondence regarding this product should be directed to the address below.

Conagra Brands  
P.O. Box 3534  
Chicago, IL 60654

### Chemical & Physical Characteristics

pH:	4.10 – 4.50
Salt, %:	1.20 Maximum
Brix:	14.3 Minimum
Color:	46.00 Minimum
Appearance:	Typical
Flavor:	Typical

### Microbiological Standards

Aerobic Plate Count:	< 100 CFU/g
Coliforms:	< 10 CFU/g
<i>Salmonella</i> :	Negative / 375g

This product is shelf-stable under normal storage conditions. This product is produced under a Food Safety Plan that is compliant with FSMA requirements. The Food Safety Plan programs are designed to manage microbiological risks and include supportive Prerequisite Programs, Operational Prerequisite Programs, validated. Good manufacturing/hygienic practices (GMPs and GHPs), hygienic zoning principles, supply chain controls, sanitation controls, and a robust environmental monitoring program are strictly adhered to during manufacturing. Therefore, the above microbiological parameters can be expected.

### Storage

Store in a cool, dry place.

### Shelf Life

630 days from date of manufacture.

### Kosher/Halal Information





Six ConAgra Drive  
Omaha, NE 68102

## Technical Data Sheet

<b>Product Name:</b>	<b>Angela Mia Extra Heavy Pizza Sauce</b>	<b>Product Code:</b>	<b>2700038867</b>
<b>Issue Date:</b>	<b>February 15, 2022</b>	<b>Net Weight:</b>	<b>6 lbs. 11 oz. (3.03kg)</b>
<b>Replace Date:</b>	<b>August 15, 2022</b>	<b>Brand:</b>	<b>Angela Mia</b>

### Lot Code Interpretation

Example: **2105722710A 03:56F**

LOT CODE (First 10 Digits)

Positions      1 – 4    =      Plant Identification [2105]  
                     5        =      Year [2017]  
                     6 – 8    =      Julian Date [227]  
                     9        =      Decade [1 = 2019]  
                     10      =      Spacer [Always 0]

OTHER CODE (Digits 11-14)\*

                     11      =      Product Code [A]  
                     12 – 15 =      Time Period [03:56]  
                     16      =      Production Line [F]

\*These numbers are for internal use only and not part of the production lot

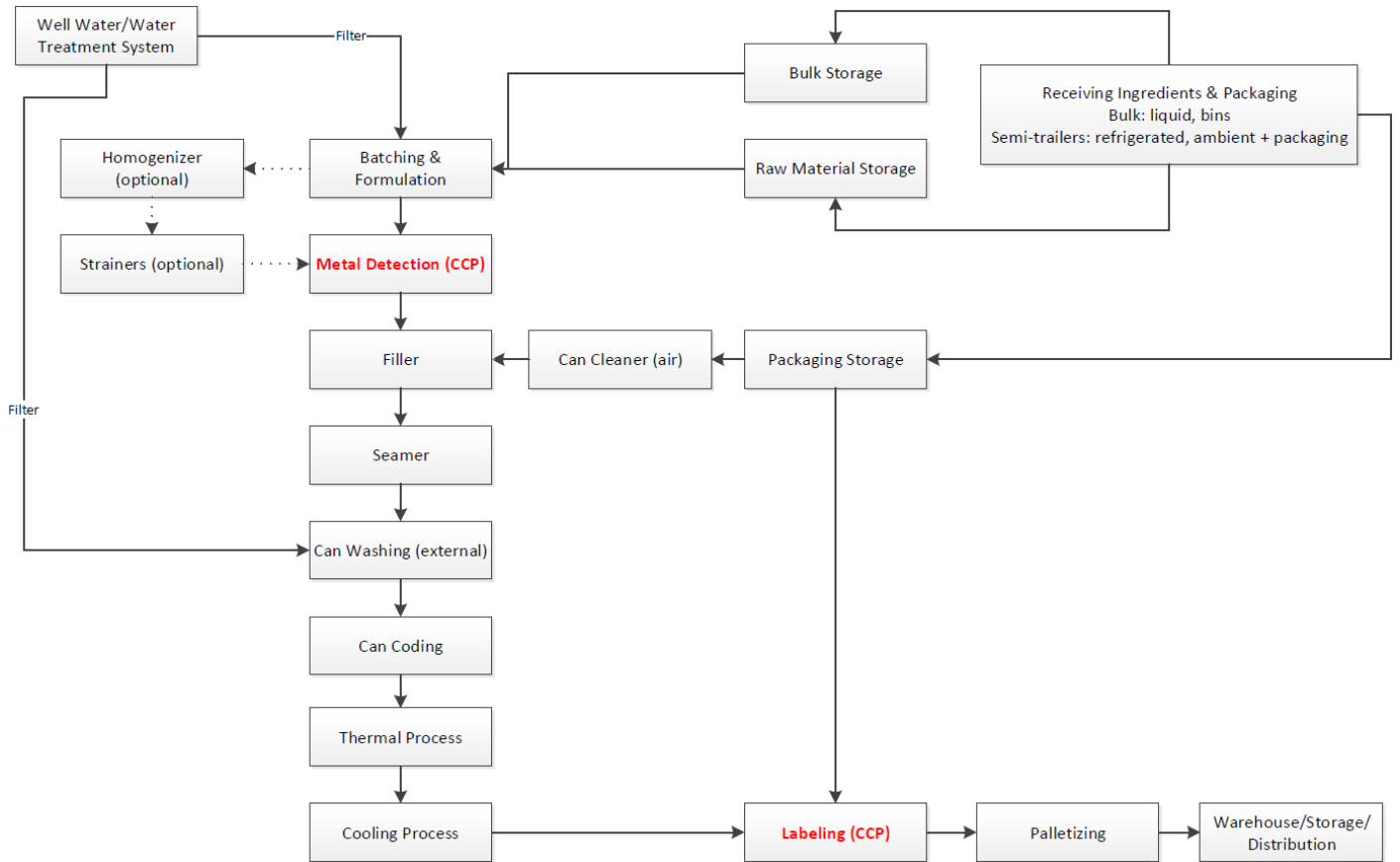


Six ConAgra Drive  
Omaha, NE 68102

## Technical Data Sheet

<b>Product Name:</b>	<b>Angela Mia Extra Heavy Pizza Sauce</b>	<b>Product Code:</b>	<b>2700038867</b>
<b>Issue Date:</b>	<b>February 15, 2022</b>	<b>Net Weight:</b>	<b>6 lbs. 11 oz. (3.03kg)</b>
<b>Replace Date:</b>	<b>August 15, 2022</b>	<b>Brand:</b>	<b>Angela Mia</b>

### Processing Flow Chart





Six ConAgra Drive  
Omaha, NE 68102

## Technical Data Sheet

<b>Product Name:</b>	<b>Angela Mia Extra Heavy Pizza Sauce</b>	<b>Product Code:</b>	<b>2700038867</b>
<b>Issue Date:</b>	<b>February 15, 2022</b>	<b>Net Weight:</b>	<b>6 lbs. 11 oz. (3.03kg)</b>
<b>Replace Date:</b>	<b>August 15, 2022</b>	<b>Brand:</b>	<b>Angela Mia</b>

### Label



### Note:

The information provided in this document is confidential and proprietary of Conagra Brands Inc. Given the confidential and proprietary nature of the information, it cannot be reproduced or provided to any third parties, including in response to any request for such information contained therein pursuant to any request from any Governmental or Regulatory body without the prior written permission of Conagra Brands Inc.

Kevin Rosenthal  
Research & Development  
International – Global Markets

If you have questions, please contact [kevin.rosenthal@conagra.com](mailto:kevin.rosenthal@conagra.com)