



Six ConAgra Drive  
Omaha, NE 68102

## Technical Data Sheet

<b>Product Name:</b>	Hunt's Whole Tomatoes	<b>Product Code:</b>	2700038010 (2700038009)
<b>Issue Date:</b>	February 23, 2022	<b>Net Weight:</b>	14.5 oz. (411g)
<b>Replace Date:</b>	August 23, 2022	<b>Brand:</b>	Hunt's

### Product Description – Whole Tomatoes

### Nutritional Information – Per 100g

Nutrient	Per 100g
Calories, kcal	24.14
Total Fat, g	0.08
Saturated Fat, g	0.02
Trans Fat, g	0.00
Cholesterol, mg	1.00
Sodium, mg	120.16
Carbohydrate, g	4.79
Dietary Fiber, g	1.58
Sugars, g	2.72
Added Sugar, g	0.00
Protein, g	0.99
Vitamin D, mcg	0.00
Calcium, mg	18.98
Iron, mg	0.27
Potassium, mg	209.26

### Ingredient Ranges (%)

Ingredient	%
Tomatoes	60 – 70%
Tomato Juice	30 – 40%
Salt	<2%
Citric Acid	<2%
Calcium Chloride	<2%

### Ingredient Statement

**INGREDIENTS:** TOMATOES, TOMATO JUICE, LESS THAN 2% OF: SALT, CITRIC ACID, CALCIUM CHLORIDE.



Six ConAgra Drive  
Omaha, NE 68102

## Technical Data Sheet

<b>Product Name:</b>	<b>Hunt's Whole Tomatoes</b>	<b>Product Code:</b>	<b>2700038010 (2700038009)</b>
<b>Issue Date:</b>	<b>February 23, 2022</b>	<b>Net Weight:</b>	<b>14.5 oz. (411g)</b>
<b>Replace Date:</b>	<b>August 23, 2022</b>	<b>Brand:</b>	<b>Hunt's</b>

### Country of Origin

This product is manufactured at a facility in the United States of America. The manufacturing site is:

554 South Yosemite Avenue  
Oakdale, California 95361

This facility is under the jurisdiction of the U.S. Food and Drug Administration (FDA) or the U.S. Department of Agriculture (USDA), and is in full compliance with requirements for Good Manufacturing Practices (GMP), Hazard Analysis and Critical Control Points (HACCP) and other pertinent food laws and regulations.

All correspondence regarding this product should be directed to the address below.

Conagra Brands  
P.O. Box 3534  
Chicago, IL 60654

### Chemical & Physical Characteristics

pH:	3.90 – 4.20
Salt, %:	0.49 Maximum
Brix:	As Found
Color:	23.00 Minimum
Appearance:	Typical
Flavor:	Typical

### Microbiological Standards

Aerobic Plate Count:	< 100 CFU/g
Coliforms:	< 10 CFU/g
<i>Salmonella</i> :	Negative / 375 g

This product is shelf-stable under normal storage conditions. Microbiological control is established and maintained through thermal processing and package integrity. This product is produced under a Food Safety Plan that is compliant with FSMA requirements. The Food Safety Plan programs are designed to manage microbiological risks and include supportive Prerequisite Programs, Operational Prerequisite Programs, and validated CCPs. Good manufacturing/hygienic practices (GMPs and GHPs), hygienic zoning principles, supply chain controls, sanitation controls, and a robust environmental monitoring program are strictly adhered to during manufacturing. Therefore, the above microbiological parameters can be expected.

### Storage

Store in a cool, dry place.

### Shelf Life

630 days from date of manufacture.

### Kosher/Halal Information





Six ConAgra Drive  
Omaha, NE 68102

## Technical Data Sheet

<b>Product Name:</b>	<b>Hunt's Whole Tomatoes</b>	<b>Product Code:</b>	<b>2700038010 (2700038009)</b>
<b>Issue Date:</b>	<b>February 23, 2022</b>	<b>Net Weight:</b>	<b>14.5 oz. (411g)</b>
<b>Replace Date:</b>	<b>August 23, 2022</b>	<b>Brand:</b>	<b>Hunt's</b>

### Lot Code Interpretation

Example:      **2105722710A 03:56F**

LOT CODE (First 10 Digits)

Positions	1 – 4	=	Plant Identification [2105]
	5	=	Year [2017]
	6 – 8	=	Julian Date [227]
	9	=	Decade [1 = 2019]
	10	=	Spacer [Always 0]

OTHER CODE (Digits 11-14)\*

	11	=	Product Code [A]
	12 – 15	=	Time Period [03:56]
	16	=	Production Line [F]

\*These numbers are for internal use only and not part of the production lot

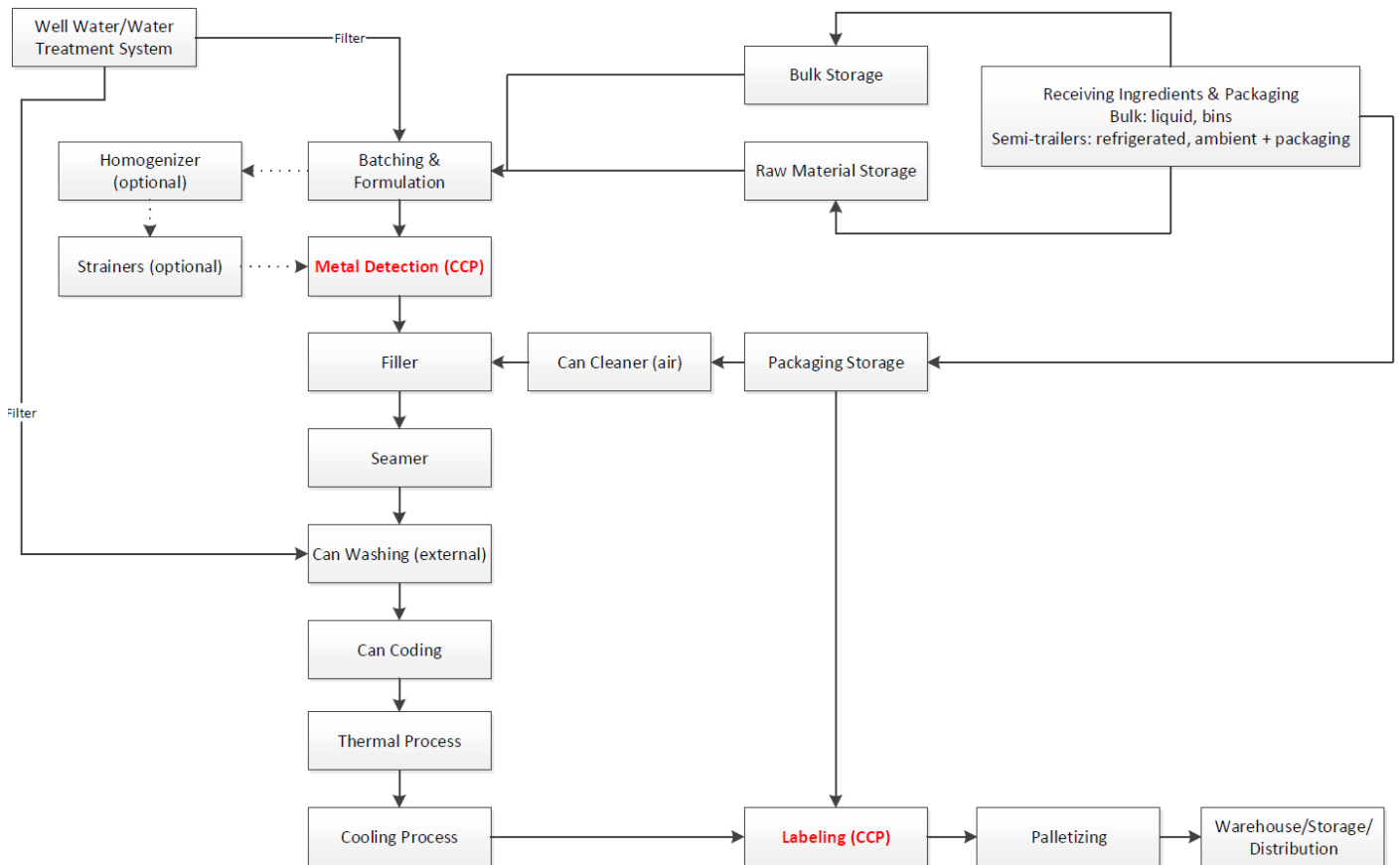


Six ConAgra Drive  
Omaha, NE 68102

## Technical Data Sheet

<b>Product Name:</b>	<b>Hunt's Whole Tomatoes</b>	<b>Product Code:</b>	<b>2700038010 (2700038009)</b>
<b>Issue Date:</b>	<b>February 23, 2022</b>	<b>Net Weight:</b>	<b>14.5 oz. (411g)</b>
<b>Replace Date:</b>	<b>August 23, 2022</b>	<b>Brand:</b>	<b>Hunt's</b>

### Processing Flow Chart





Six ConAgra Drive  
Omaha, NE 68102

## Technical Data Sheet

<b>Product Name:</b>	<b>Hunt's Whole Tomatoes</b>	<b>Product Code:</b>	<b>2700038010 (2700038009)</b>
<b>Issue Date:</b>	<b>February 23, 2022</b>	<b>Net Weight:</b>	<b>14.5 oz. (411g)</b>
<b>Replace Date:</b>	<b>August 23, 2022</b>	<b>Brand:</b>	<b>Hunt's</b>

### Label

**100% NATURAL**

**Hunts**

**Whole**

**NATURALLY STEAM PEELED**

**PROUDLY GROWN**

At Hunt's we STEAM PEEL our tomatoes with simple hot water. That means no chemicals, like lye\*, are ever used to peel our tomatoes. Our tomatoes are vine ripened and picked at the peak of ripeness because we know great tasting meals start with great ingredients. **COOK CONFIDENTLY!**

\*Lye peeling is generally recognized as safe by the FDA and has no adverse effects on the healthfulness of tomatoes.

**Nutrition Facts**  
about 3.5 servings per container  
Serving size 1/2 cup (121g/about 2 small tomatoes)

Amount per serving	30	% Daily Value*
<b>Calories</b>		
<b>Total Fat</b> 0g		0%
Saturated Fat 0g		0%
Trans Fat 0g		
<b>Cholesterol</b> 0mg		0%
<b>Sodium</b> 170mg		7%
<b>Total Carbohydrate</b> 6g		2%
Dietary Fiber 2g		7%
Total Sugars 3g		
Includes 0g Added Sugars		0%
<b>Protein</b> 1g		
Vit. D 0mcg 0%	Calcium 0mg 0%	
Iron 0mg 0%	Potas. 250mg 6%	

\*The % Daily Value (DV) tells you how much a nutrient in a serving of food contributes to a daily diet. 2,000 calories a day is used for general nutrition advice.

**INGREDIENTS:** TOMATOES, TOMATO JUICE, LESS THAN 2% OF: SALT, CITRIC ACID, CALCIUM CHLORIDE.

Conagra Brands  
P.O. BOX 3534  
OMAHA, NE 68103-0354  
Questions, visit us at [www.hunts.com](http://www.hunts.com) or call 1-800-858-6372

NO ARTIFICIAL PRESERVATIVES OR INGREDIENTS.

NON GMO Project VERIFIED [nongmoproject.org](http://nongmoproject.org)

TOMATOES (K)

NET WT 14.5 OZ (411g)

10091474

### Note:

The information provided in this document is confidential and proprietary of Conagra Brands, Inc. Given the confidential and proprietary nature of the information, it cannot be reproduced or provided to any third parties, including in response to any request for such information contained therein pursuant to any request from any Governmental or Regulatory body without the prior written permission of Conagra Brands, Inc.

Kevin Rosenthal  
Research & Development  
International – Global Markets

If you have questions, please contact [kevin.rosenthal@conagra.com](mailto:kevin.rosenthal@conagra.com)