



Six ConAgra Drive  
Omaha, NE 68102

## Technical Data Sheet

<b>Product Name:</b>	<b>Swiss Miss Hot Cocoa Mix Marshmallow</b>	<b>Product Code:</b>	<b>1570005232</b>
<b>Issue Date:</b>	<b>March 8, 2022</b>	<b>Net Weight:</b>	<b>26 oz. Canister (737g)</b>
<b>Replace Date:</b>	<b>September 8, 2022</b>	<b>Brand:</b>	<b>Swiss Miss</b>

### Product Description – Hot Cocoa Mix, Marshmallow

### Nutritional Information – Per 100g

Nutrient	Per 100g
Calories, kcal	358.3
Total Fat, g	6.3
Saturated Fat, g	5.5
Trans Fat, g	0.0
Cholesterol, mg	1.0
Sodium, mg	485.5
Carbohydrates, g	85.3
Dietary Fiber, g	2.8
Sugars, g	64.2
Protein, g	3.8
Calcium, mg	130.5
Iron, mg	1.9
Potassium, mg	976.6

### Ingredient Ranges (%)

Ingredient	%
Sugar	50 – 60%
Corn Syrup	10 – 20%
Modified Whey	10 – 20%
Cocoa (Processed with Alkali)	5 – 10%
Hydrogenated Coconut Oil	5 – 10%
Marshmallows (Sugar, Corn Syrup, Modified Corn Starch, Gelatin, Artificial Flavor)	5 – 10%
Nonfat Milk	2 – 5%
Salt	<2%
Dipotassium Phosphate	<2%
Mono- And Diglycerides (Emulsifier)	<2%
Artificial Flavor	<2%

Contains: Milk

### Ingredient Statement

**INGREDIENT STATEMENT: SUGAR, CORN SYRUP, MODIFIED WHEY, COCOA (PROCESSED WITH ALKALI), HYDROGENATED COCONUT OIL, MARSHMALLOWS (SUGAR, CORN SYRUP, MODIFIED CORN STARCH, GELATIN, ARTIFICIAL FLAVOR), NONFAT MILK, SALT, DIPOTASSIUM PHOSPHATE, MONO- AND DIGLYCERIDES, ARTIFICIAL FLAVOR.  
CONTAINS: MILK**



Six ConAgra Drive  
Omaha, NE 68102

## Technical Data Sheet

<b>Product Name:</b>	<b>Swiss Miss Hot Cocoa Mix Marshmallow</b>	<b>Product Code:</b>	<b>1570005232</b>
<b>Issue Date:</b>	<b>March 8, 2022</b>	<b>Net Weight:</b>	<b>26 oz. Canister (737g)</b>
<b>Replace Date:</b>	<b>September 8, 2022</b>	<b>Brand:</b>	<b>Swiss Miss</b>

### Country of Origin

This product is manufactured at a facility in the United States of America. The manufacturing site for this product is:

104 River Road  
Menomonie, Wisconsin 54751

This facility is under the jurisdiction of the U.S. Food and Drug Administration (FDA) or the U.S. Department of Agriculture (USDA), and is in full compliance with requirements for Good Manufacturing Practices (GMP), Hazard Analysis and Critical Control Points (HACCP) and other pertinent food laws and regulations.

All correspondence regarding this product should be directed to the address below.

Conagra Brands  
P.O. Box 3534  
Chicago, IL 60654

### Chemical & Physical Characteristics

Density, grams/cc:	0.539 Minimum
Color:	Typical
Appearance:	Typical
Flavor:	Typical
Texture:	Typical

### Microbiological Standards

Aerobic Plate Count:	< 10,000 CFU/g
Coliforms:	< 10 CFU/g
<i>Salmonella</i> :	Negative / 375g

This product is shelf-stable under normal storage conditions. This product is produced under a Food Safety Plan that is compliant with FSMA requirements. The Food Safety Plan programs are designed to manage microbiological risks and include supportive Prerequisite Programs, Operational Prerequisite Programs, and validated CCPs. Good manufacturing/hygienic practices (GMPs and GHPs), hygienic zoning principles, supply chain controls, sanitation controls, and a robust environmental monitoring program are strictly adhered to during manufacturing. Therefore, the above microbiological parameters can be expected.

### Storage

Store in a cool, dry place.

### Shelf Life

720 days from date of manufacture.

### Kosher/Halal Information

N/A



Six ConAgra Drive  
Omaha, NE 68102

## Technical Data Sheet

Product Name:	Swiss Miss Hot Cocoa Mix Marshmallow	Product Code:	1570005232
Issue Date:	March 8, 2022	Net Weight:	26 oz. Canister (737g)
Replace Date:	September 8, 2022	Brand:	Swiss Miss

### Lot Code Interpretation

Example:                   **21034071011217**

LOT CODE (First 10 Digits)

Positions    1 – 4    = Plant Identification [2103]  
                  5        = Year [2014]  
                  6 – 8    = Julian Date [071]  
                  9 – 10 = Line Designation [01]

OTHER CODE (Digits 11-14)\*

11 – 14 = Time Period [12:17]

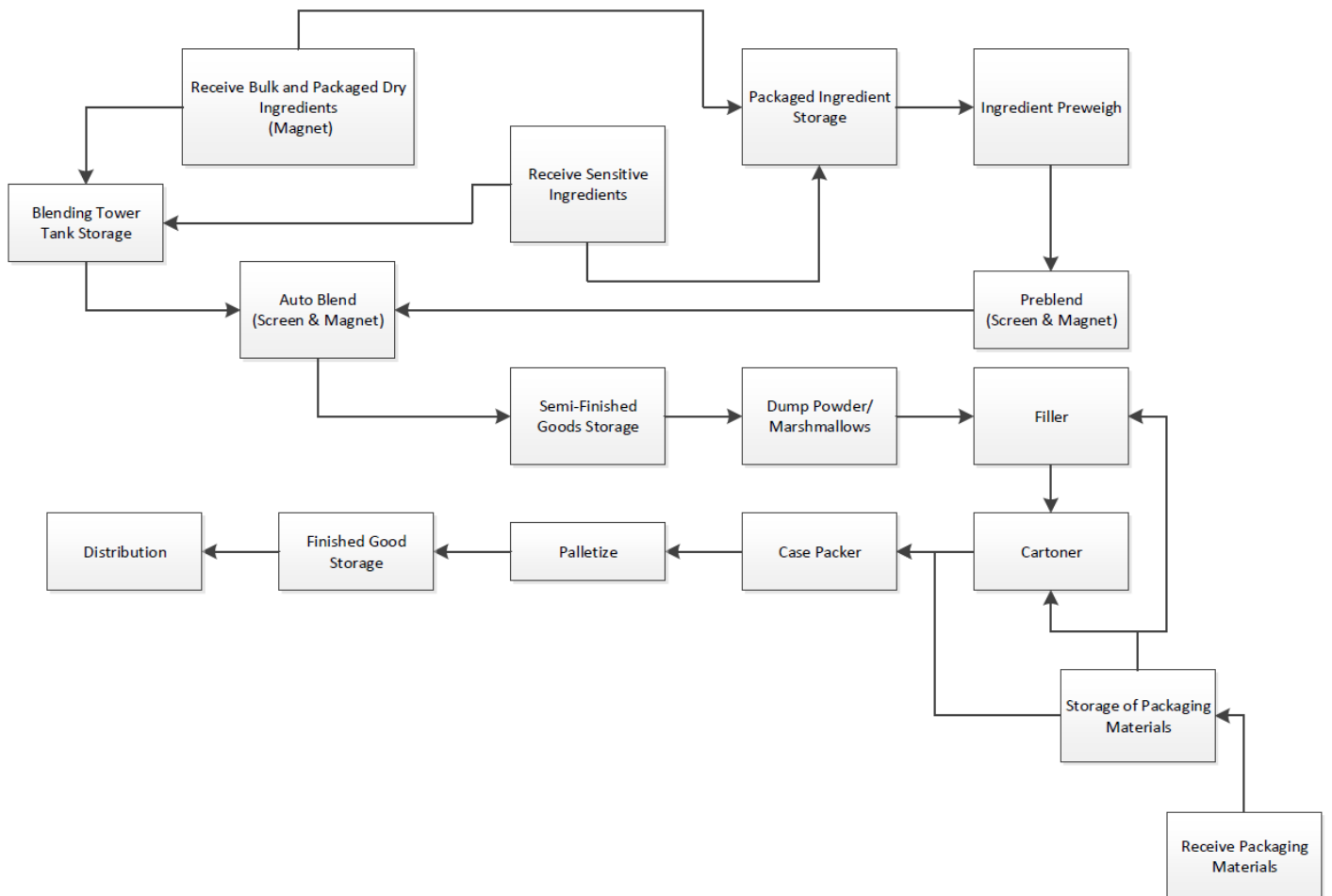
\*These numbers are for internal use only and not part of the production lot



## Technical Data Sheet

<b>Product Name:</b>	<b>Swiss Miss Hot Cocoa Mix Marshmallow</b>	<b>Product Code:</b>	<b>1570005232</b>
<b>Issue Date:</b>	<b>March 8, 2022</b>	<b>Net Weight:</b>	<b>26 oz. Canister (737g)</b>
<b>Replace Date:</b>	<b>September 8, 2022</b>	<b>Brand:</b>	<b>Swiss Miss</b>

### Processing Flow Chart





Six ConAgra Drive  
Omaha, NE 68102

## Technical Data Sheet

<b>Product Name:</b>	<b>Swiss Miss Hot Cocoa Mix Marshmallow</b>	<b>Product Code:</b>	<b>1570005232</b>
<b>Issue Date:</b>	<b>March 8, 2022</b>	<b>Net Weight:</b>	<b>26 oz. Canister (737g)</b>
<b>Replace Date:</b>	<b>September 8, 2022</b>	<b>Brand:</b>	<b>Swiss Miss</b>

### Label



### Note:

The information provided in this document is confidential and proprietary of Conagra Brands, Inc. Given the confidential and proprietary nature of the information, it cannot be reproduced or provided to any third parties, including in response to any request for such information contained therein pursuant to any request from any Governmental or Regulatory body without the prior written permission of Conagra Brands, Inc.

Kevin Rosenthal  
Research & Development  
International – Global Markets

If you have questions, please contact [kevin.rosenthal@conagra.com](mailto:kevin.rosenthal@conagra.com)