



Technical Data Sheet

Product Name:	Swiss Miss Hot Cocoa Mix Marshmallow	Product Code:	1570005002
Issue Date:	January 6, 2022	Net Weight:	10ct – 28g Envelopes
Replace Date:	June 6, 2022	Brand:	Swiss Miss

Product Description – Hot Cocoa Mix, Marshmallows

Nutritional – Per 100g

Nutrient	Per 100g
Energy, kcal	430
Total Fat, g	7
Saturated Fat, g	5.5
Trans Fat, g	0.0
Cholesterol, mg	1
Sodium, mg	500
Carbohydrate, g	86
Dietary Fiber, g	1
Sugars, g	64
Protein, g	3.5
Calcium, mg	130.5
Iron, mg	1.9
Potassium, mg	976.3

Nutrition on Label

Nutrition Facts		
Serving Size: 1 Envelope (28g)		
Servings Per Container: 10		
	Per Serving	Per 100g
Energy	120 kcal	430 kcal
Protein	1g	3.5g
Fat	2g	7g
Carbohydrate	24g	86g
Dietary Fiber	<1g	1g
Sugars	18g	64g
Cholesterol	0mg	1mg
Sodium	140mg	500mg
Vitamin A	0%	0%
Vitamin C	0%	0%
Calcium	4%	14%
Iron	2%	7%



Technical Data Sheet

Product Name:	Swiss Miss Hot Cocoa Mix Marshmallow	Product Code:	1570005002
Issue Date:	January 6, 2022	Net Weight:	10ct – 28g Envelopes
Replace Date:	June 6, 2022	Brand:	Swiss Miss

Ingredient Ranges (%)

Ingredient	%
Sugar	50 – 60%
Corn Syrup	10 – 20%
Modified Whey	10 – 20%
Cocoa (Processed With Alkali)	5 – 10%
Hydrogenated Coconut Oil	5 – 10%
Nonfat Milk	2 – 5%
Marshmallows- Sugar 60-70% Corn Syrup 20-30% Modified Corn Starch 5-10% Gelatin 2-5% (Derived From Pork) Artificial Flavor <2%	2 – 5%
Salt	<2%
Dipotassium Phosphate	<2%
Mono- And Diglycerides (Emulsifier)	<2%
Artificial Flavor	<2%
Total	100%

Contains: Milk

Ingredient Statement

INGREDIENT STATEMENT: SUGAR, CORN SYRUP, MODIFIED WHEY, COCOA (PROCESSED WITH ALKALI), HYDROGENATED COCONUT OIL, NONFAT MILK, MARSHMALLOWS (SUGAR, CORN SYRUP, MODIFIED CORN STARCH, GELATIN, ARTIFICIAL FLAVOR), SALT, DIPOTASSIUM PHOSPHATE, MONO- AND DIGLYCERIDES, ARTIFICIAL FLAVOR. CONTAINS: MILK.



Technical Data Sheet

Product Name:	Swiss Miss Hot Cocoa Mix Marshmallow	Product Code:	1570005002
Issue Date:	January 6, 2022	Net Weight:	10ct – 28g Envelopes
Replace Date:	June 6, 2022	Brand:	Swiss Miss

Country of Origin

This product is manufactured at a facility in the United States of America. The manufacturing site is:

Conagra Brands
104 River Rd
Menomonie, Wisconsin 54751

This facility is under the jurisdiction of the U.S. Food and Drug Administration (FDA) or the U.S. Department of Agriculture (USDA), and is in full compliance with requirements for Good Manufacturing Practices (GMP), Hazard Analysis and Critical Control Points (HACCP) and other pertinent food laws and regulations.

All correspondence regarding this product should be directed to the address below.

Conagra Brands
P.O. Box 3534
Chicago, IL 60654

Chemical & Physical Characteristics

Density, grams/cc:	0.539 Minimum
Color:	Typical
Appearance:	Typical
Flavor:	Typical
Texture:	Typical

Microbiological Standards

Aerobic Plate Count:	< 10,000 CFU/g
Coliforms:	< 10 CFU/g
<i>Salmonella</i> :	Negative / 375g

This product is shelf-stable under normal storage conditions. This product is produced under a Food Safety Plan that is compliant with FSMA requirements. The Food Safety Plan programs are designed to manage microbiological risks and include supportive Prerequisite Programs, Operational Prerequisite Programs, and validated CCPs. Good manufacturing/hygienic practices (GMPs and GHPs), hygienic zoning principles, supply chain controls, sanitation controls, and a robust environmental monitoring program are strictly adhered to during manufacturing. Therefore, the above microbiological parameters can be expected.

Storage

Store in a cool, dry place.

Shelf Life

720 days from date of manufacture.

Kosher/Halal Information

N/A



Six ConAgra Drive
Omaha, NE 68102

Technical Data Sheet

Product Name:	Swiss Miss Hot Cocoa Mix Marshmallow	Product Code:	1570005002
Issue Date:	January 6, 2022	Net Weight:	10ct – 28g Envelopes
Replace Date:	June 6, 2022	Brand:	Swiss Miss

Lot Code Interpretation

LOT CODE EXPLANATION [Menomonie Plant]:

Example: 2103407101**1217**

LOT CODE (First 10 Digits)

Positions 1 to 4 = Plant Identification [2103]

5 = Year [2014]

6,7 & 8 = Julian Date [071]

9 & 10 = Line Identification [01]

OTHER CODE (Digits 11-14)

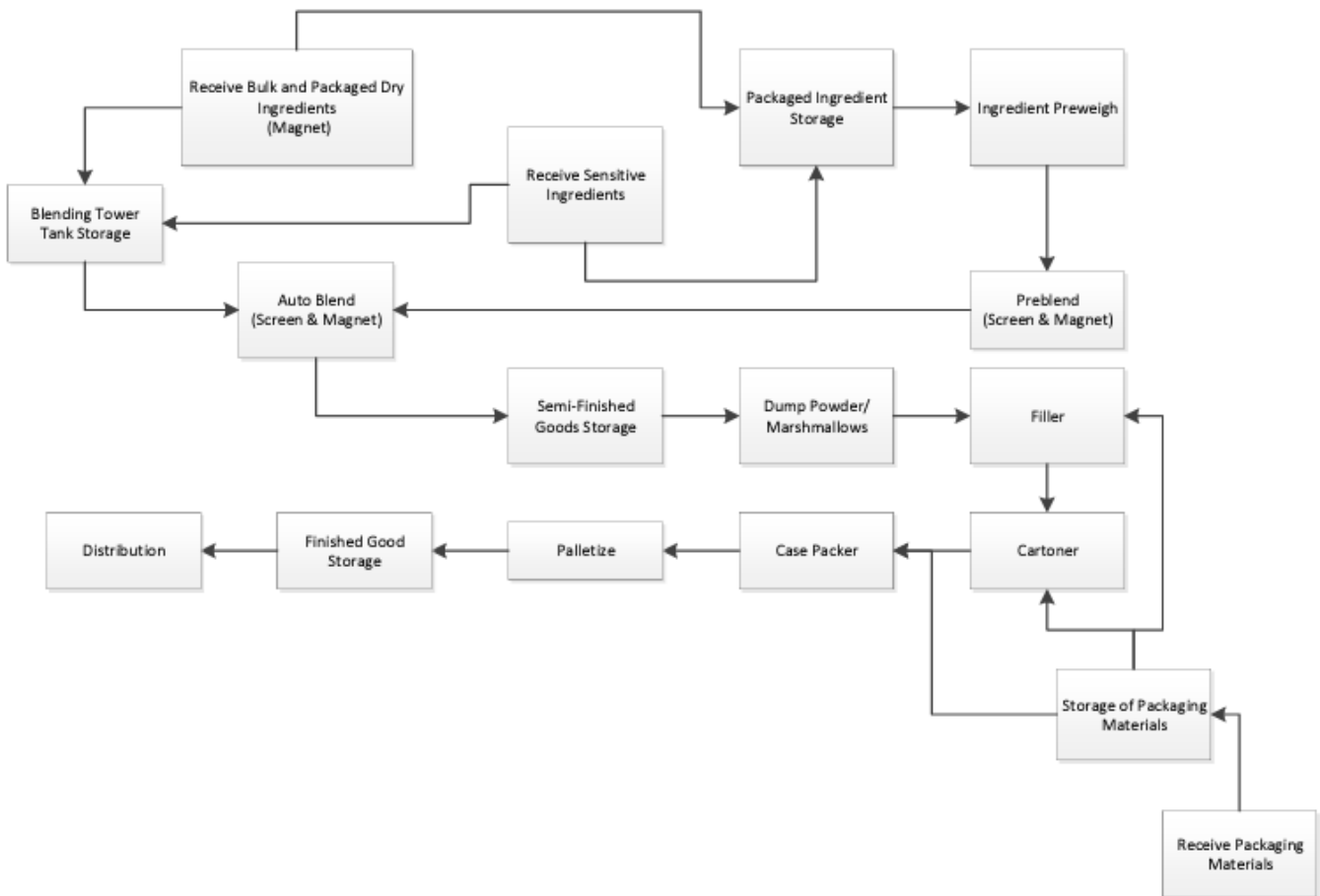
11-14 = Time period [12:17]



Technical Data Sheet

Product Name:	Swiss Miss Hot Cocoa Mix Marshmallow	Product Code:	1570005002
Issue Date:	January 6, 2022	Net Weight:	10ct – 28g Envelopes
Replace Date:	June 6, 2022	Brand:	Swiss Miss

Processing Flow Chart





Six ConAgra Drive
Omaha, NE 68102

Technical Data Sheet

Product Name:	Swiss Miss Hot Cocoa Mix Marshmallow	Product Code:	1570005002
Issue Date:	January 6, 2022	Net Weight:	10ct – 28g Envelopes
Replace Date:	June 6, 2022	Brand:	Swiss Miss

Label



Nutrition Facts

Serving Size: 1 Envelope (28g)
Servings Per Container: 10

	Per Serving	% Daily Value*
Energy	120 kcal	430 kcal
Protein	1g	3.5g
Fat	2g	7g
Carbohydrate	24g	86g
Dietary Fiber	<1g	1g
Sugars	18g	64g
Cholesterol	0mg	1mg
Sodium	140mg	500mg
Vitamin A	0%	0%
Vitamin C	0%	0%
Calcium	4%	14%
Iron	2%	7%

Datos de Nutrición

Porciones en la tarrina: 10 porciones (28 g)
Porciones por envase: 10

	Por porción	Porcentaje de Valor Diario*
Energía	120 kcal	430 kcal
Proteínas	1 g	3.5 g
Grasas	2 g	7 g
Carbohidratos	24 g	86 g
Fibra Dietética	<1 g	1 g
Azúcares	18 g	64 g
Colessterol	0 mg	1 mg
Sodio	140 mg	500 mg
Vitamina A	0 %	0 %
Vitamina C	0 %	0 %
Calcio	4 %	14 %
Hierro	2 %	7 %

INGREDIENT STATEMENT: SUGAR, CORN SYRUP, MODIFIED WHEY, COCOA (PROCESSED WITH ALKALI), HYDROXYLATED COCCINIL OIL, NONFAT MILK, MARSHMALLOWS, CORN, CORN SYRUP, MODIFIED CORN STARCH, GELATIN, ARTIFICIAL FLAVOR, SALT, DIPOSSPHUM PHOSPHATE, MONO- AND DIGLYCERIDES, ARTIFICIAL FLAVOR. CONTAINS: MILK.

DECLARACIÓN DE INGREDIENTES: AZÚCAR, ARABE DE MAÍZ, SUEÑO MODIFICADO, CALDO (PROCESADO CON ALKALI), ACEITE DE COCO, HIDROXIDADO, LECHE DESCREMADA, MARCHALLOS, ARABE DE MAÍZ, ALMIDÓN DE MAÍZ MODIFICADO, GELATINA, SABOR ARTIFICIAL, SAL, FOSFATO DIFOSFÓRICO, MONO Y DIGLICÉRIDOS, SABOR ARTIFICIAL. CONTIENE: LECHE.

Imported and distributed in South Korea by: Meang Family Co. Ltd., 23, Cheong Gae-ro 2nd fl, Jung-gu, Seoul Special City, Korea, Tel: +82-2-723-8175
Imported and distributed in Singapore by: MASARA Marketing PTE LTD, 13 Seokdo South Road, Singapore 758074, Tel: +65 6511 7300 Fax: +65 6759 7303
Imported and distributed in Trinidad and Tobago by: Massey Distribution, Coc Macaya Road & Churchill Roosevelt Highway, St. Andrew, WI, Tel: +1 868-642-4434 Fax: +1 868-645-8520

Imported and distributed in Costa Rica by: CAMESA, S.A. C/Av. de Palencia, Costa Rica. Nevozap, edificio Global, 1 km norte de la Dca. From conjunto a zona Franca San. Tel: +506 2436-7000 NIT 3101192302
Número de Registro: A-5307-13

CONAGRA BRANDS
FOR EXPORT ONLY. MADE IN USA.
Storage instructions: Store in a cool dry place.
SWISS MISS is a trademark of Conagra Foods RHM, Inc.
Instrucciones de almacenamiento: guardar en un lugar fresco y seco.
SWISS MISS es la marca de fábrica de Conagra Foods RHM, Inc.

Note:

The information provided in this document is confidential and proprietary of Conagra Brands, Inc. Given the confidential and proprietary nature of the information, it cannot be reproduced or provided to any third parties, including in response to any request for such information contained therein pursuant to any request from any Governmental or Regulatory body without the prior written permission of Conagra Brands, Inc.

Jeanny De La Fe

Jeanny De La Fe
Research & Development
International – Global Markets

If you have questions, please contact kevin.rosenthal@conagra.com