


Product info sheet: NaturFrisk (Bitter) LEMON - Softdrinks EXPORT

NATURFRISK AS - DENMARK



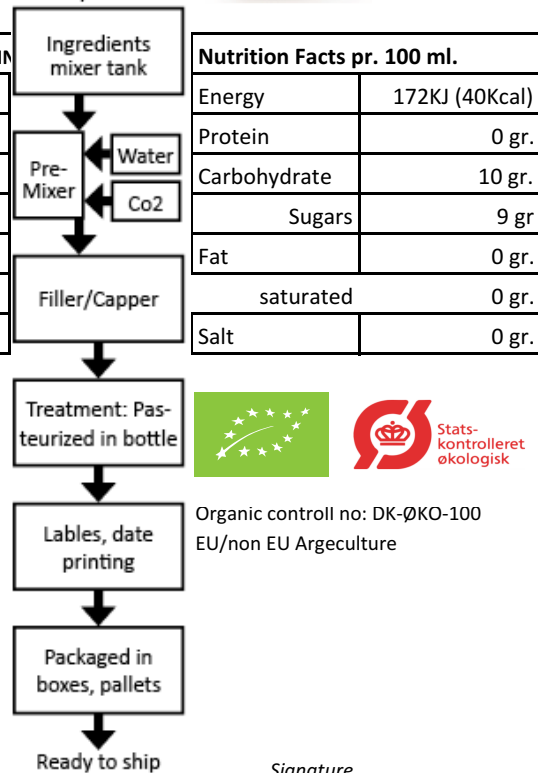
Product no: 68-1046					
Packaging	Bottle (25 cl)	Box (12xBottle)	Pallet (12kg)	Container 20	Container 40
Bottle	1	12	1824	20064	43776
Box		1	152	1672	3648
Pallet (EURO)			1	11	24
Hight	185 mm	195 mm	1670 mm		
Lenght	60 mm	245 mm	1.200 mm		
Depth	60 mm	185 mm	800 mm		
Weight total: Gross/Brutto	447 gr	5.500 gr	840 kg	9.200 kg	20.100 kg
Weight Netto:	270 gr				
Packaging details			Picture:		
crown/steel	1,9 gr (steel shell)	38 gr			
crown (lining compound, PE based)	0,2g plastic	4 gr			
Glass/Bottle empty	170 gr	2040 gr			
Content - 250 ml					
Paper/cardboard	0,6 gr	140 gr			
plastic/ Product					
EAN number/ GTIN- 13					
intrastat code:					
Best before: from production date	24 month	(DD/YY/YY)			

Bitterlemon

ORGANIC NaturFrisk (Bitter) LEMON - Softdrinks		
Ingredients:	% Content	COUNTRY OF ORIGIN
Water, H2O	73,95	Denmark
Grapefruit juice* strait, <i>Grapefruit NFC brix 12</i>	15	Israel
Cane sugar*, <i>Saccharum officinarum, sugarcane (about brix 100)</i>	9	India
Lemon juice* from conc. <i>Lemon (brix 48)</i>	3	Argentina/Brazil
Lime extract*, <i>Lime (brix 0,8)</i>	0,05	France
TOTAL	100	*= Organic
Treatment: Pasteurized in bottle	pH: 3,8	Brix 10
Holding time 10min. central temp. 65°C max.temp. 74°C		
Mixingtime: 10 - 20 min.		

Remarks: No radiation treatment is used for the ingredients or the final products.
 Storage keep dry and dark, temp 5-30 degree C.
 Before serving shake well, serve cold.
 After opening consume within 2-3 days, and keep cold
 No preservatives or additives is added.
 we keep the rights to change in recipe and lable designs
 Der tages forbehold for evt. Trykfejl.

Flow / Process



NaturFrisk AS - Oerbaek Brewery

Assensvej 38

DK - 5853 Ørbæk