



Brand <b>OTA</b>	Description <b>Protein Mysli</b>		
Net Content <b>350 Gram</b>	Functional name <b>OTA Protein Choko granola</b>	Regulated Name <b>Mysli</b>	Sales Units per Pack <b>7</b>
GTIN <b>05701164713199</b>	Identification <b>150072</b>	Country of origin <b>Denmark</b>	Packaging <b>Box (BX)</b>
Shelf life <b>182 Days</b>	Total lifespan <b>273 Days</b>	Opened lifespan -	

### Ingredients

Ingredienser: havregryn (70%), hvedeklid, hvedegluten, dadelpasta, hvedemel, frysetørret jordbær, rosinpasta, solsikkeolie. Kan indeholde spor af nødder.

### Usage

-

### Storage

Opbevaring: Tørt, ikke for varmt og ikke sammen med produkter med stærk lugt.

Temperature MIN: - MAX: -

### Allergens

<b>Gluten</b> Contains	<b>Crustacean</b> Undeclared	<b>Egg</b> Undeclared	<b>Fish</b> Undeclared	<b>Peanuts</b> Undeclared	<b>Soybean</b> Undeclared	<b>Milk</b> Undeclared
<b>Tree Nuts</b> May contain	<b>Celery</b> Undeclared	<b>Mustard</b> Undeclared	<b>Sesame Seed</b> Undeclared	<b>Dioxide and Sulphite</b> Undeclared	<b>Lupine</b> Undeclared	<b>Molluscs</b> Undeclared

### Nutrients

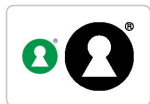
Serving size  
100 Gram

Energy	1536 Kilojoule, 367 Kilocalorie (international table)
Fat	6.4 Gram
Of which saturated fat	1.2 Gram
Carbohydrate	52 Gram
Of which sugars	7.1 Gram
Protein	18 Gram
Salt equivalent	0.21 Gram
Fibre, total dietary	15 Gram

### Contact

Type Consumer Support (GS1 Code) (CXC)

### Packaging Marks



### Preparation Serving

-